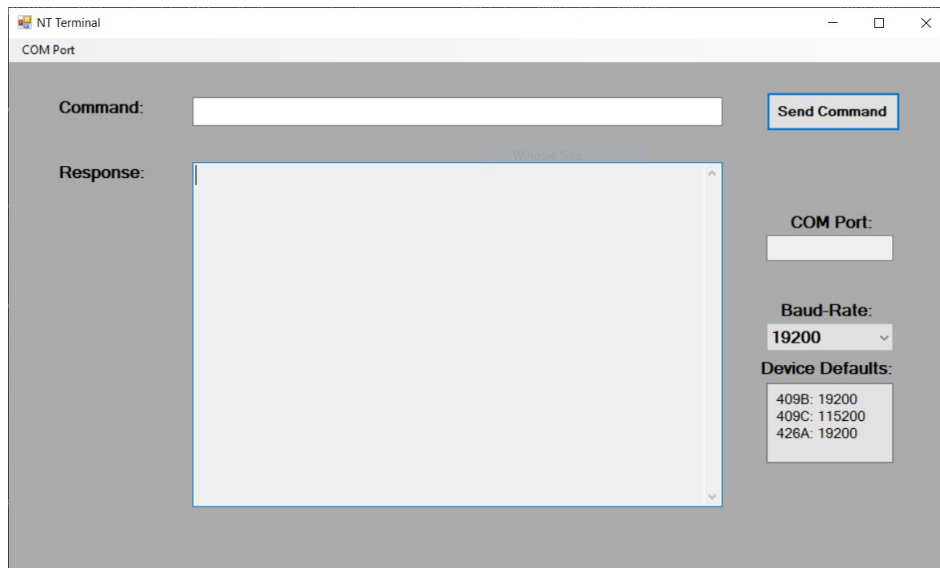


NOVATECH INSTRUMENTS

SOFTWARE DESCRIPTION AND INSTALLATION **NT TERMINAL**



1.0 DESCRIPTION

NT Terminal is a terminal emulator program for Windows computers that is designed to be used with all signal generators manufactured by Novatech Instruments. It enables users to send commands from a host computer to the signal generator and display the information returned from the signal generator.

NT Terminal has two menus. These are **COM Port** and **Baud Rate**. It also includes display fields that show the current COM Port and Baud Rate settings and a command data entry field to enter and send commands.

1.1 COM PORT MENU.

This menu enables the user to view available host computer COM ports and to select the host computer COM port number that is currently connected to the signal generator.

1.2 BAUD-RATE MENU.

This menu enables the user to set the host computer baud rate to the value that agrees with the baud rate of the signal generator currently connected to the host computer. The default baud rates for Novatech Instruments signal generators are as follows:

DDS9m	- 19,200 baud (RS232)
409B	- 19,200 baud (RS232)
409B/USB	- 19,200 baud (USB)
409C	- 115,200 (USB)